

Soft Phone connection

Set up a software telephone so that you can play with Voximal. We recommend Zoiper or YateClient which are free. Download them from :

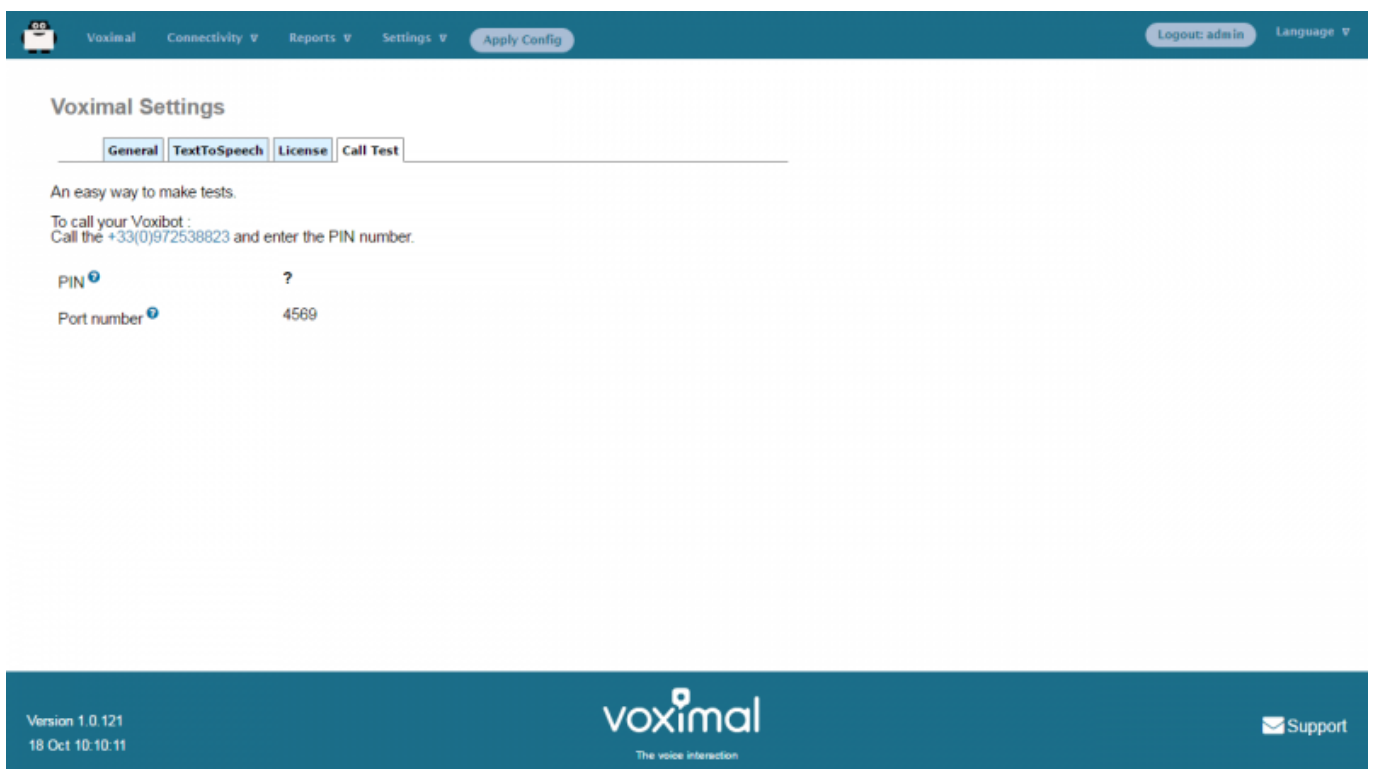
- [laxLite](#) (old windows application)
- [Zoiper](#) (freeware with commercial offer)
- [YateClient](#) (opensource freeware)

Account datas :

- username : user
- password : (get it form the Voximal/Settings/Test)
- server : (the IP adress of your server)

Get your password from the Web Interface

Select Setting → Voximal Setting → Test



The screenshot shows the Voximal web interface. The top navigation bar includes 'Voximal', 'Connectivity', 'Reports', 'Settings', and 'Apply Config'. The user is logged in as 'admin'. The main content area is titled 'Voximal Settings' and has tabs for 'General', 'TextToSpeech', 'License', and 'Call Test'. The 'Call Test' tab is active. Below the tabs, there is a section titled 'An easy way to make tests.' with instructions: 'To call your Voxibot : Call the +33(0)972538823 and enter the PIN number.' There are two input fields: 'PIN' with a question mark and 'Port number' with the value '4569'. The footer contains the version '1.0.121', the date '18 Oct 10:10:11', the Voximal logo with the tagline 'The voice interaction', and a 'Support' link.

Get your password from the Asterisk console

Execute :

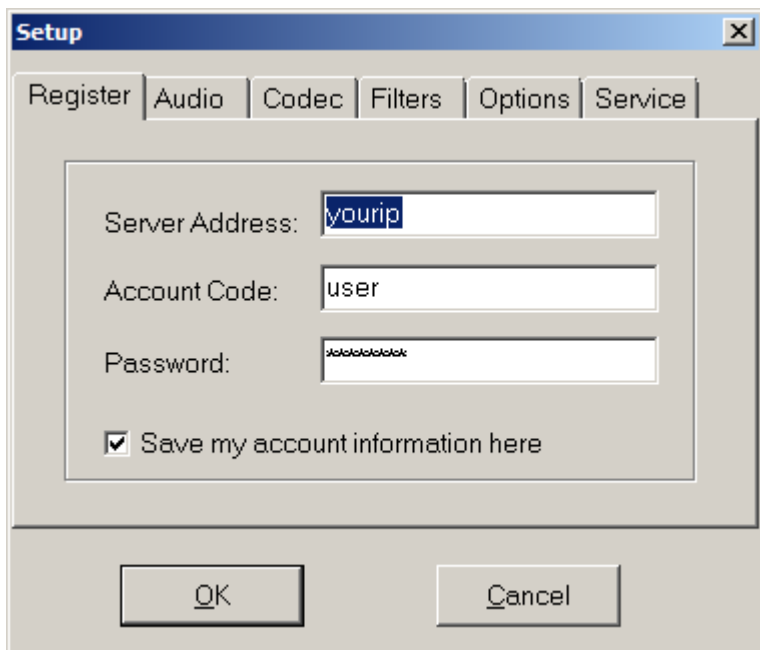
```
raspbx*CLI> voximal show license
Version      : V14.0
Build
CVS Revision : $Revision: 1.853 $
```

```
Gcc      : V4.9
Arch     : 32 bits
Target   : i686
Asterisk : V13.11.2
Options sum :
Date     : Nov  3 2016 21:40:06
Code     : b6de76bcb827eb415eb3b6f75b1001
UID      : cb773b52-a362-11e6-af57-b827eb415eb3
PIN      : 3152
Password : cb773b52
Key      :
Max sessions : 1
Options
  TextToSpeech : Yes
  Speech       : Yes
State       : ok
```

Your password is : **cb773b52**

IaxLite

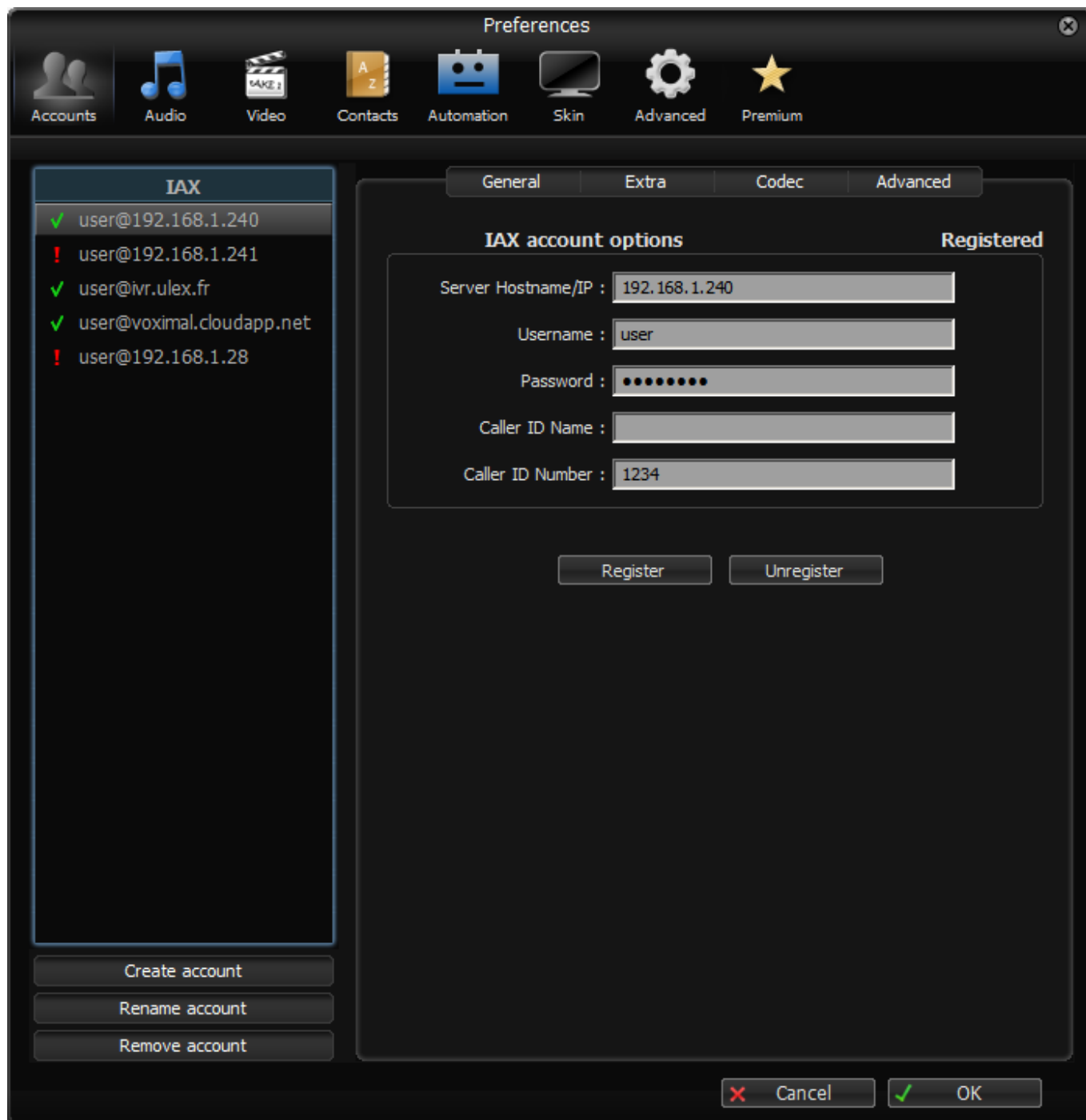
- Run IAXLite once you've installed it and enter the credentials for the account on your Voximal. You'll need the IP address of your server and your extension 'user' password.
- Click the **[Set.]** button.
- Fill in the blanks using the IP address of your server, 'user' for your account name, and whatever password got from your Voximal installation server.



Zoiper

- Run Zoiper once you've installed it and enter the credentials for the account on your Voximal. You'll need the IP address of your server and your extension 'user' password.

- Choose Settings → Accounts and click the **[Create Account]** button.
- Select IAX.
- Fill in the blanks using the IP address of your server, 'user' for your account name, and whatever password got from your Voximal installation server.



YateClient

- Run YateClient once you've installed it and enter the credentials for the 'user' extension on Voximal. You'll need the IP address of your server plus your extension user password.
- Choose Settings → Accounts and click the **[New]** button.
- Fill in the blanks using the IP address of your server, 'user' for your account name, and whatever password got from your Voximal installation server.

Edit account: iaxuser@192.168.1.28

Use provider:	-none-	▼	Domain:	<input type="text"/>	
Protocol:	iax	▼	Outbound proxy:	<input type="text"/>	
Username:	user			Registration Interval:	<input type="text"/>
Password:	<input type="password"/>				
Save password:	<input type="checkbox"/>				
Server:	192.168.1.28				

From: <https://wiki.voximal.com/> - **Voximal documentation**

Permanent link: https://wiki.voximal.com/doku.php?id=installation_guide:softphone:start

Last update: **2018/05/07 11:26**

