



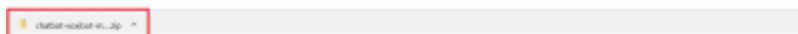
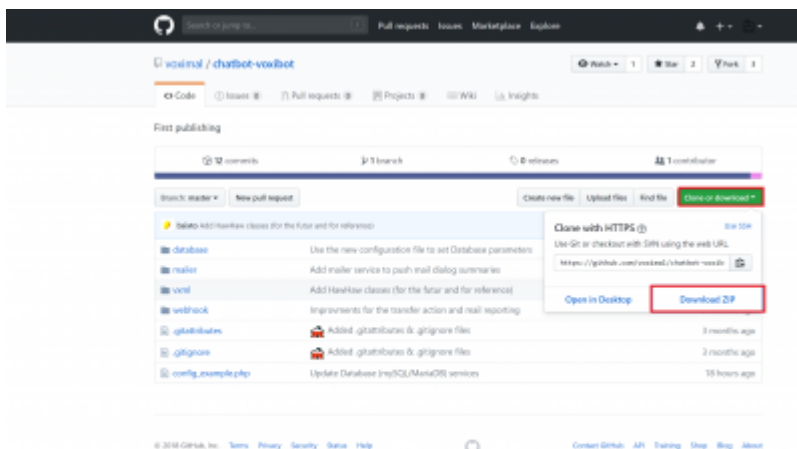
# Voxibot

## set up voxibot with right package :

To be able to connect chatbot with voxibot we need specific database package which we would like to implement and integrate. therefore the first step is to download the necessary data files from the source of voxibot platform. Our sources exist on GitHub [Voxibot](#). These files are the backbone of our communication process between chatbot engine and voxibot.

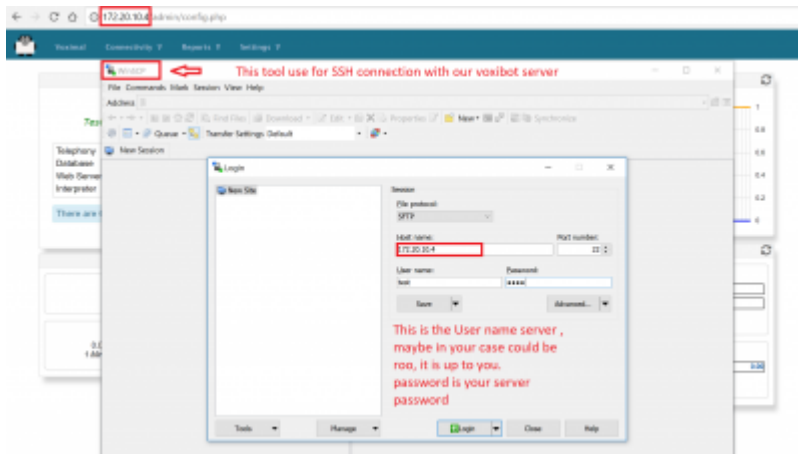
### Let's start

**1.** Go to the files and folders by this link [Voxibot packages](#). Click **clone or download** then **Download ZIP**. when the download finishes you go to a directory of file place and Extract the file.

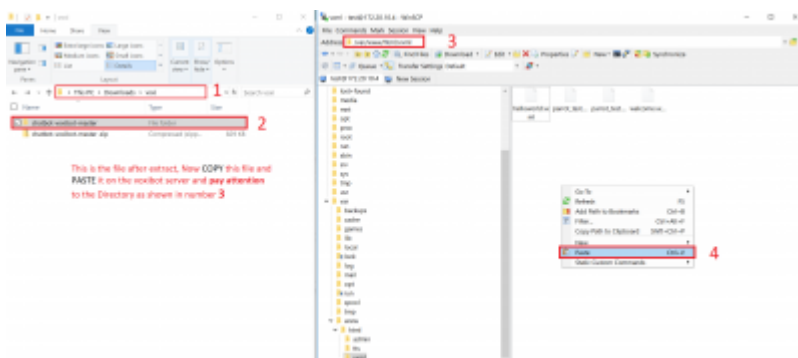


**Remark :** This step if your host machine is windows and you download the package on Windows. It is better to use SSH connection to insert the package on your voxibot server. In our case, we use a tool called WinSCP

**2.** Connect your SSh tool (**WinSCP**) to your voxibot server, put the **host name**: IP of your server, **user name** : root or [ your server name ] **password** : [ root password ] or [ user password ]



3. Go to the file that you download and copy it then Paste it on your voxibot server with correct directory /var/www/html/vxml



Go and browse the folder and verify all the files. So By finishing these steps, you can start your chatbot integration with various engines. all you need now some credentials and set it on root.vxml file and conversation file depend on the engine. For instant conversation\_watson.vxml in case of watson engine and so on. You can find the Documentation regards to an engine that you want. click here [Connecting with chatbot](#) :

From:  
<https://wiki.voximal.com/> - **Voximal documentation**

Permanent link:  
[https://wiki.voximal.com/doku.php?id=developer\\_guide:voxibot\\_howto&rev=1528965604](https://wiki.voximal.com/doku.php?id=developer_guide:voxibot_howto&rev=1528965604)

Last update: **2018/06/14 08:40**

