

Active a Voxibot Amazon AWS image



- **Web site** : <https://aws.amazon.com/>

Amazon Web Services (AWS) is a secure cloud services platform, offering compute power, database storage, content delivery and other functionality to help businesses scale and grow. Explore how millions of customers are currently leveraging AWS cloud products and solutions to build sophisticated applications with increased flexibility, scalability and reliability.

More information : [Getting started with AWS](#)

Connect to your AC2 Dashboard

A screenshot of the AWS console homepage in French. The header includes the AWS logo, navigation links like "Menu", "Mise en route", "Produits", "Solutions", "Plus", and user options like "Français", "Mon compte", and "Créer votre compte". The main banner area has a green background with the text "Créez votre premier projet avec AWS en utilisant nos guides étape par étape." and a "Voir les projets" link. To the right, there's a box for "Gérez vos ressources" with a "Se connecter à la console" button and information about the "Application mobile AWS Console". Below the banner, there are four service tiles: "AMAZON API GATEWAY", "AMAZON ECS", "AWS KEY MANAGEMENT SERVICE", and "AMAZON SNOWBALL", each with a brief description and a "En savoir plus" link.

Amazon Web Services

Compute

- EC2: Virtual Servers in the Cloud
- EC2 Container Service: Run and Manage Docker Containers
- Elastic Beanstalk: Run and Manage Web Apps
- Lambda: Run Code without Thinking about Servers
- Server Migration: Migrate on-premises servers to AWS

Storage & Content Delivery

- S3: Scalable Storage in the Cloud
- CloudFront: Global Content Delivery Network
- Elastic File System: Fully Managed File System for EC2
- Glacier: Archive Storage in the Cloud
- Snowball: Large Scale Data Transport
- Storage Gateway: Hybrid Storage Integration

Database

- RDS: Managed Relational Database Service
- DynamoDB: Managed NoSQL Database
- ElastiCache: In-Memory Cache
- Redshift: Fast, Simple, Cost-Effective Data Warehousing

Developer Tools

- CodeCommit: Store Code in Private Git Repositories
- CodeDeploy: Automate Code Deployments
- CodePipeline: Release Software using Continuous Delivery
- CloudWatch: Monitor Resources and Applications
- CloudFormation: Create and Manage Resources with Templates
- CloudTrail: Track User Activity and API Usage
- Config: Track Resource Inventory and Changes
- OpsWorks: Automate Operations with Chef
- Service Catalog: Create and Use Standardized Products
- Trusted Advisor: Optimize Performance and Security

Internet of Things

- AWS IoT: Connect Devices to the Cloud

Game Development

- GameLift: Deploy and Scale Session-based Multiplayer Games

Mobile Services

- Mobile Hub: Build, Test, and Monitor Mobile Apps
- Cognito: User Identity and App Data Synchronization
- Device Farm: Test Android, iOS, and Web Apps on Real Devices in the Cloud
- Mobile Analytics: Collect, View and Export App Analytics
- SNS: Push Notification Service

Application Services

- API Gateway: Build, Deploy and Manage APIs
- AppStream: Low Latency Application Streaming
- CloudSearch: Managed Search Service
- Elastic Transcoder: Easy-to-Use Scalable Media Transcoding
- SES: Email Sending and Receiving Service
- SQS: Message Queue Service

Resource Groups [Learn more](#)

A resource group is a collection of resources that share one or more tags. Create a group for each project, application, or environment in your account.

[Create a Group](#) [Tag Editor](#)

Additional Resources

[Getting Started](#)
Read our documentation or view our training to learn more about AWS.

[AWS Console Mobile App](#)
View your resources on the go with our AWS Console mobile app, available from Amazon Appstore, Google Play, or iTunes.

[AWS Marketplace](#)
Find and buy software, launch with 1-Click and pay by the hour.

[AWS re:Invent Announcements](#)
Explore the next generation of AWS cloud capabilities. [See what's new](#)

Service Health

[All services operating normally.](#)

Updated: Nov 07 2016 12:04:00 GMT+0100

EC2 Dashboard

Resources

You are using the following Amazon EC2 resources in the EU Central (Frankfurt) region:

- 0 Running Instances
- 0 Dedicated Hosts
- 0 Volumes
- 1 Key Pairs
- 0 Placement Groups
- 0 Elastic IPs
- 0 Snapshots
- 0 Load Balancers
- 2 Security Groups

[Build and run distributed, fault-tolerant applications in the cloud with Amazon Simple Workflow Service.](#)

Create Instance

To start using Amazon EC2 you will want to launch a virtual server, known as an Amazon EC2 instance.

[Launch Instance](#)

Note: Your instances will launch in the EU Central (Frankfurt) region

Service Health

Service Status:

- EU Central (Frankfurt): This service is operating normally

Availability Zone Status:

- eu-central-1a: Availability zone is operating normally
- eu-central-1b: Availability zone is operating normally

[Service Health Dashboard](#)

Scheduled Events

EU Central (Frankfurt): No events

Account Attributes

Supported Platforms

- VPC

Default VPC

- vpc-laffe773

Resource ID length management

Additional Information

- [Getting Started Guide](#)
- [Documentation](#)
- [All EC2 Resources](#)
- [Forums](#)
- [Pricing](#)
- [Contact Us](#)

Launch a new instance

- Click the **[Launch Instance]** button.
- Select **[Community AMIs]**
- Enter in the search field : **voxibot**
- Select the latest Voxibot AMI by pushing the **[Select]** button.

Step 1: Choose an Amazon Machine Image (AMI)

An AMI is a template that contains the software configuration (operating system, application server, and applications) required to launch your instance. You can select an AMI provided by AWS, our user community, or the AWS Marketplace; or you can select one of your own AMIs.

Quick Start | My AMIs | AWS Marketplace | **Community AMIs**

Operating system

- ☐ Amazon Linux
- ☐ Cent OS
- ☐ Debian
- ☐ Fedora
- ☐ Gentoo
- ☐ OpenSUSE
- ☐ Other Linux
- ☐ Red Hat
- ☐ SUSE Linux
- ☐ Ubuntu

Search:

Voxibot 1.0.117 latest - ami-95d497e6

Voxibot V1.0.117 latest for Amazon Linux

Root device type: ebs | Virtualization type: hvm

Select

64-bit

1 to 1 of 1 AMIs

© 2008 - 2016, Amazon Web Services, Inc. or its affiliates. All rights reserved. | Privacy Policy | Terms of Use

Launch next steps

Step 2: Choose an Instance Type

Amazon EC2 provides a wide selection of instance types optimized to fit different use cases. Instances are virtual servers that can run applications. They have varying combinations of CPU, memory, storage, and networking capacity, and give you the flexibility to choose the appropriate mix of resources for your applications. [Learn more](#) about instance types and how they can meet your computing needs.

Filter by: **All instance types** | **Current generation** | [Show/Hide Columns](#)

Currently selected: t2.micro (Variable ECUs, 1 vCPUs, 2.5 GHz, Intel Xeon Family, 1 GiB memory, EBS only)

	Family	Type	vCPUs	Memory (GiB)	Instance Storage (GB)	EBS-Optimized Available	Network Performance
<input type="checkbox"/>	General purpose	t2.nano	1	0.5	EBS only	-	Low to Moderate
<input checked="" type="checkbox"/>	General purpose	t2.micro <small>Free tier eligible</small>	1	1	EBS only	-	Low to Moderate
<input type="checkbox"/>	General purpose	t2.small	1	2	EBS only	-	Low to Moderate
<input type="checkbox"/>	General purpose	t2.medium	2	4	EBS only	-	Low to Moderate
<input type="checkbox"/>	General purpose	t2.large	2	8	EBS only	-	Low to Moderate
<input type="checkbox"/>	General purpose	m4.large	2	8	EBS only	Yes	Moderate
<input type="checkbox"/>	General purpose	m4.xlarge	4	16	EBS only	Yes	High

[Cancel](#) | [Previous](#) | [Review and Launch](#) | [Next: Configure Instance Details](#)

© 2008 - 2016, Amazon Web Services, Inc. or its affiliates. All rights reserved. | Privacy Policy | Terms of Use

You can skip the fine tune option to directly launch the instance, so you will configure your Security group here are later from the Dashboard :

- Open TCP / SSH port : 22
- Open TCP / HTTP port : 80
- Open UDP / IAX port : 4569

The IAX port is used to allows placing calls from :

- a IAX Soft Phone ([Soft Phone connection](#))
- the test numbers ([Call the test service](#))

If you choice to connect a Voip account to a Telecom provider, you will need to open :

- Open UDP / SIP port : 5060 (take care about the SIP attacks)
- Open UDP / RTP ports : 10000 to 20000

Step 2: Choose an Instance Type

Amazon EC2 provides a wide selection of instance types optimized to fit different use cases. Instances are virtual servers that can run applications. They have varying combinations of CPU, memory, storage, and networking capacity, and give you the flexibility to choose the appropriate mix of resources for your applications. [Learn more](#) about instance types and how they can meet your computing needs.

Filter by: All instance types Current generation Show/Hide Columns

Step 7: Review Instance Launch

Please review your instance launch details. You can go back to edit changes for each section. Click **Launch** to assign a key pair to your instance and complete the launch process.

⚠ Improve your instances' security. Your security group, launch-wizard-1, is open to the world.

Your instances may be accessible from any IP address. We recommend that you update your security group rules to allow access from known IP addresses only. You can also open additional ports in your security group to facilitate access to the application or service you're running, e.g., HTTP (80) for web servers. [Edit security groups](#)

AMI Details [Edit AMI](#)

Voxibot 1.0.117 latest - ami-95d497e6
 Voxibot V1.0.117 latest for Amazon Linux
 Root Device Type: ebs Virtualization type: hvm

Instance Type [Edit instance type](#)

Instance Type	ECUs	vCPUs	Memory (GiB)	Instance Storage (GB)	EBS-Optimized Available	Network Performance
t2.micro	Variable	1	1	EBS only	-	Low to Moderate

Security Groups [Edit security groups](#)

Security group name launch-wizard-1
Description launch-wizard-1 created 2016-11-07T12:11:52.532+01:00

Type ⓘ	Protocol ⓘ	Port Range ⓘ	Source ⓘ
SSH	TCP	22	0.0.0.0/0

Instance Details [Edit instance details](#)

Storage [Edit storage](#)


Tags [Edit tags](#)

[Cancel](#)
[Previous](#)
[Launch](#)

Feedback English © 2008 - 2016, Amazon Web Services, Inc. or its affiliates. All rights reserved. [Privacy Policy](#) [Terms of Use](#)


Validate your instance configuration.

You got the Launch status : Instance launching...

 AWS Services Edit

Ulex Innovative Systems Ireland Support

 **Your instances are now launching**
The following instance launches have been initiated: [i-30809ba7](#) [View launch log](#) **Get notified of estimated charges**
Create billing alerts to get an email notification when estimated charges on your AWS bill exceed an amount you define (for example, if you exceed the free usage tier). Feedback  English © 2008 - 2016, Amazon Web Services, Inc. or its affiliates. All rights reserved. [Privacy Policy](#) [Terms of Use](#)

 AWS Services Edit

Ulex Innovative Systems Ireland Support

EC2 Dashboard

Events

Tags

Reports

Limits

INSTANCES

Instances

Spot Requests

Reserved Instances

Scheduled Instances

Dedicated Hosts

IMAGES

AMIs

Bundle Tasks

ELASTIC BLOCK STORE

Volumes

Snapshots

NETWORK & SECURITY

Security Groups

Elastic IPs

Placement Groups

Key Pairs

Network Interfaces

Launch Instance

Connect

Actions ▼

Filter by tags and attributes or search by keyword

1 to 1 of 1

Name	Instance ID	Instance Type	Availability Zone	Instance State	Status Checks	Alarm Status	Public DNS
	i-30809ba7	t2.micro	eu-west-1b	running	Initializing	None	ec2-52-212-253-65.eu-...

Instance: i-30809ba7

Public DNS: ec2-52-212-253-65.eu-west-1.compute.amazonaws.com

Description

Status Checks

Monitoring

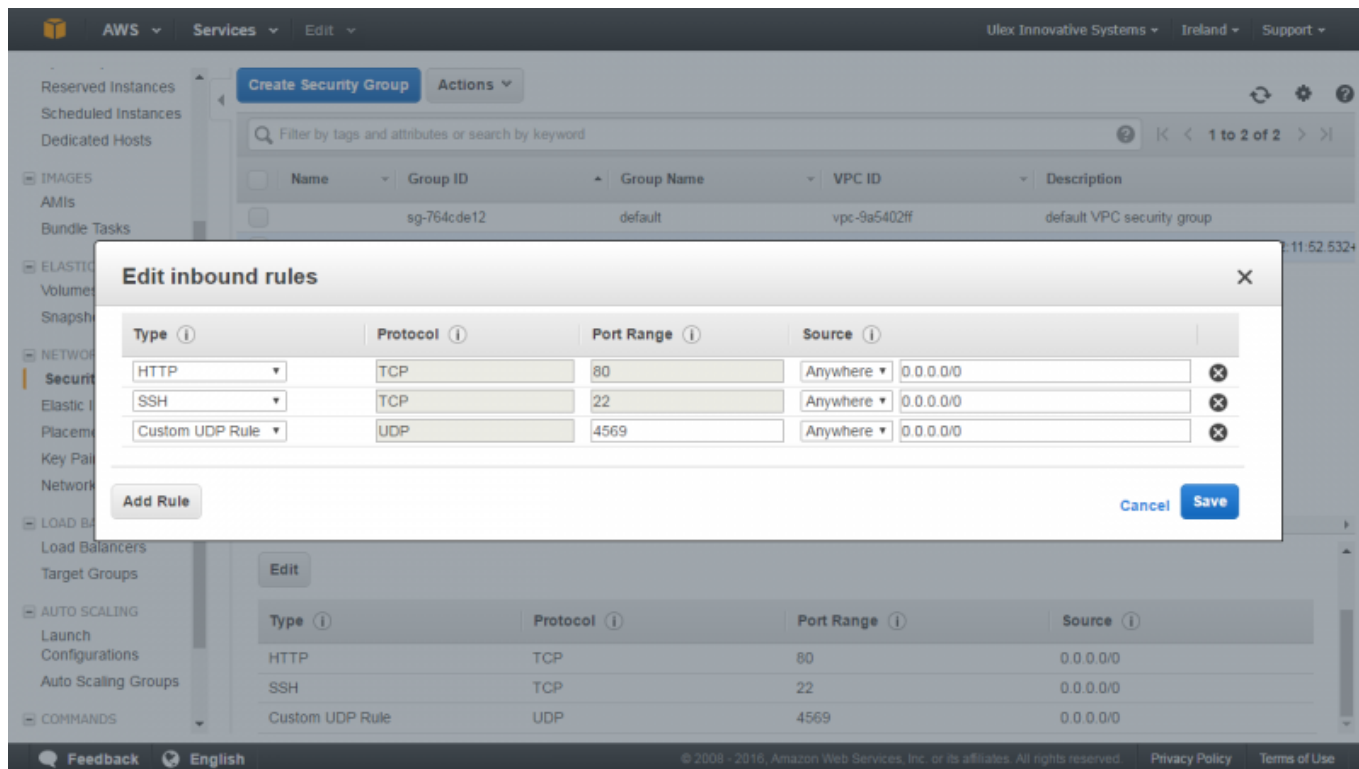
Tags

Instance ID	i-30809ba7	Public DNS	ec2-52-212-253-65.eu-west-1.compute.amazonaws.com
Instance state	running	Public IP	52.212.253.65
Instance type	t2.micro	Elastic IPs	

 Feedback  English © 2008 - 2016, Amazon Web Services, Inc. or its affiliates. All rights reserved. [Privacy Policy](#) [Terms of Use](#)

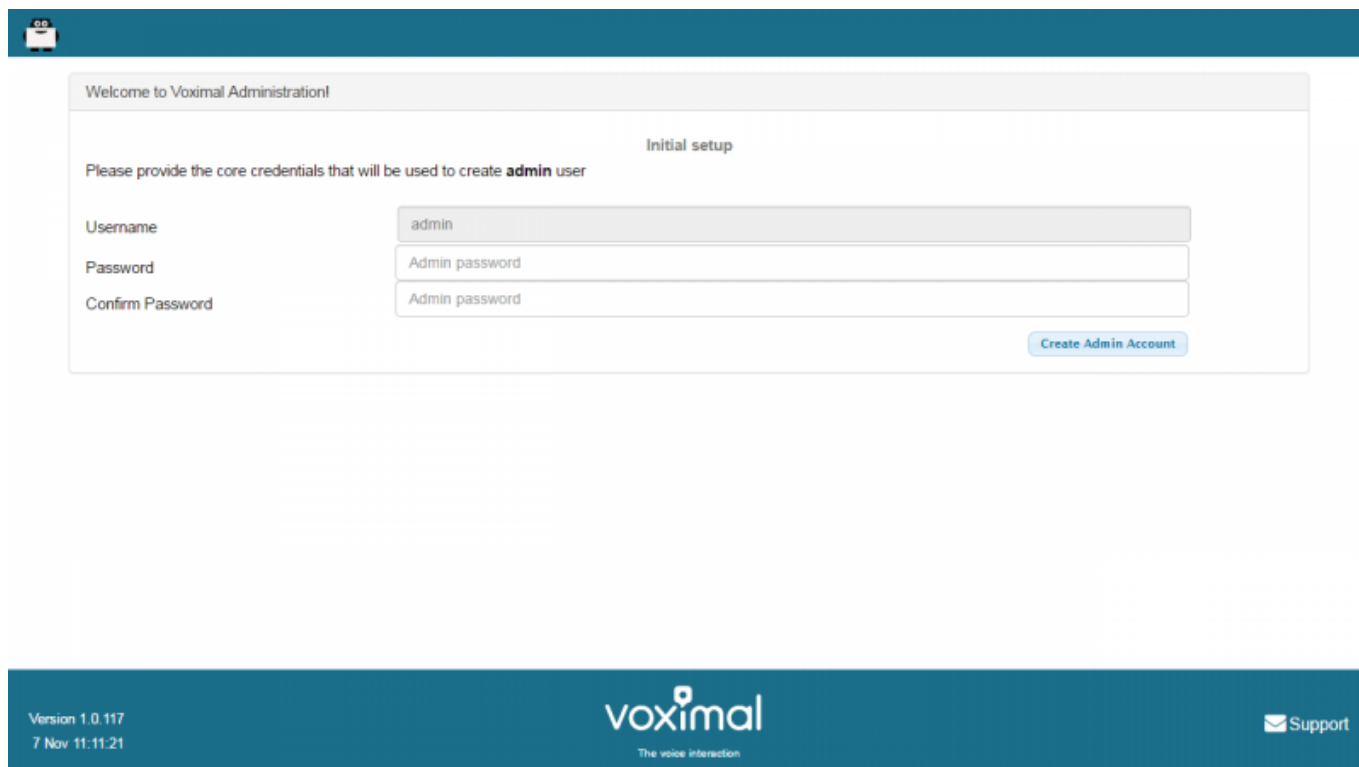
Window size: 1280 x 720
Viewport size: 1280 x 720

Edit Security groups (open/close TCP/UDP ports)

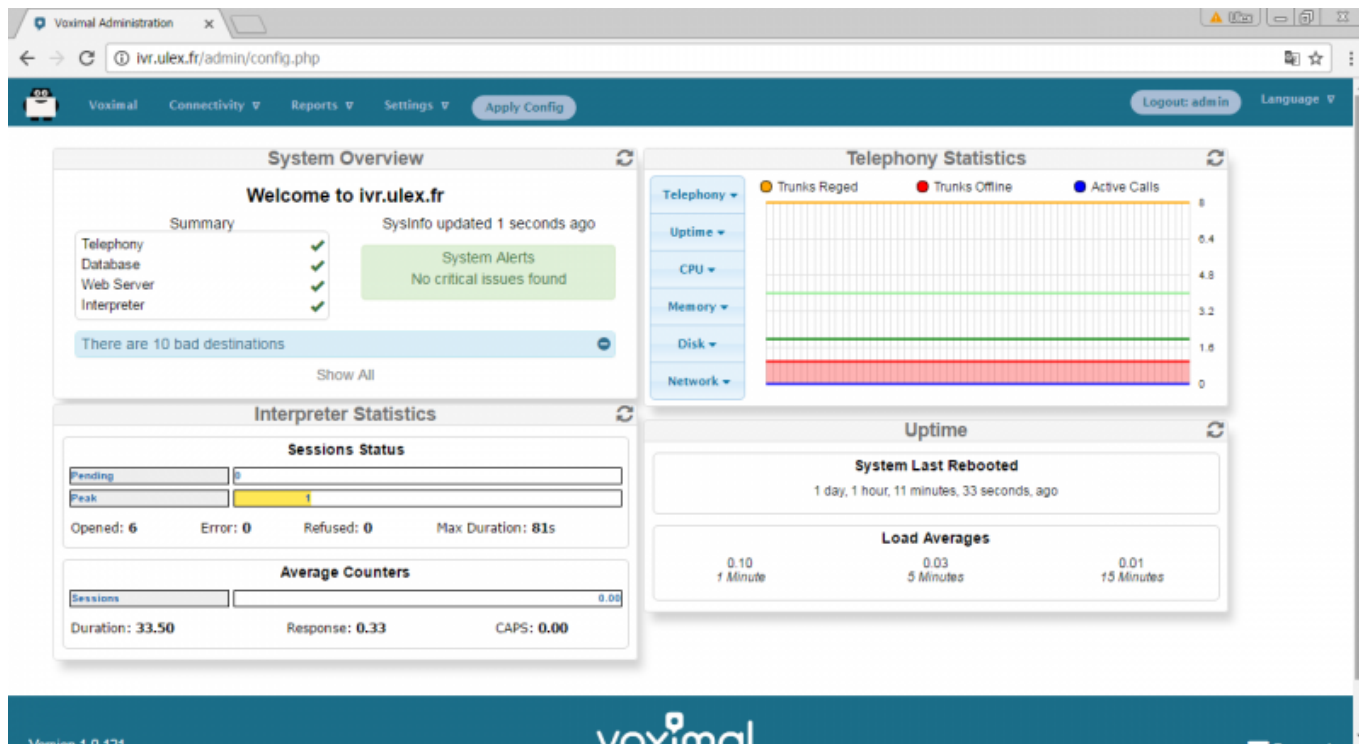


Finalize your installation

To finish your installation you need to connect for the first time to your Web Interface to set your administration password. For security reasons, you need do to it just after the launch.



You will see the main status panel :



Test your installation

You have two simple ways to test and validate your installation :

- With a soft phone : [Soft Phone connection](#)
- With the test numbers : [Call the test service](#)

From:

<https://wiki.voximal.com/> - **Voximal documentation**

Permanent link:

https://wiki.voximal.com/doku.php?id=cloudproviders:amazon_aws

Last update: **2016/11/07 12:26**

