

# Soft Phone connection

Set up a software telephone so that you can play with Voximal. We recommend Zoiper or YateClient which are free. Download them from :

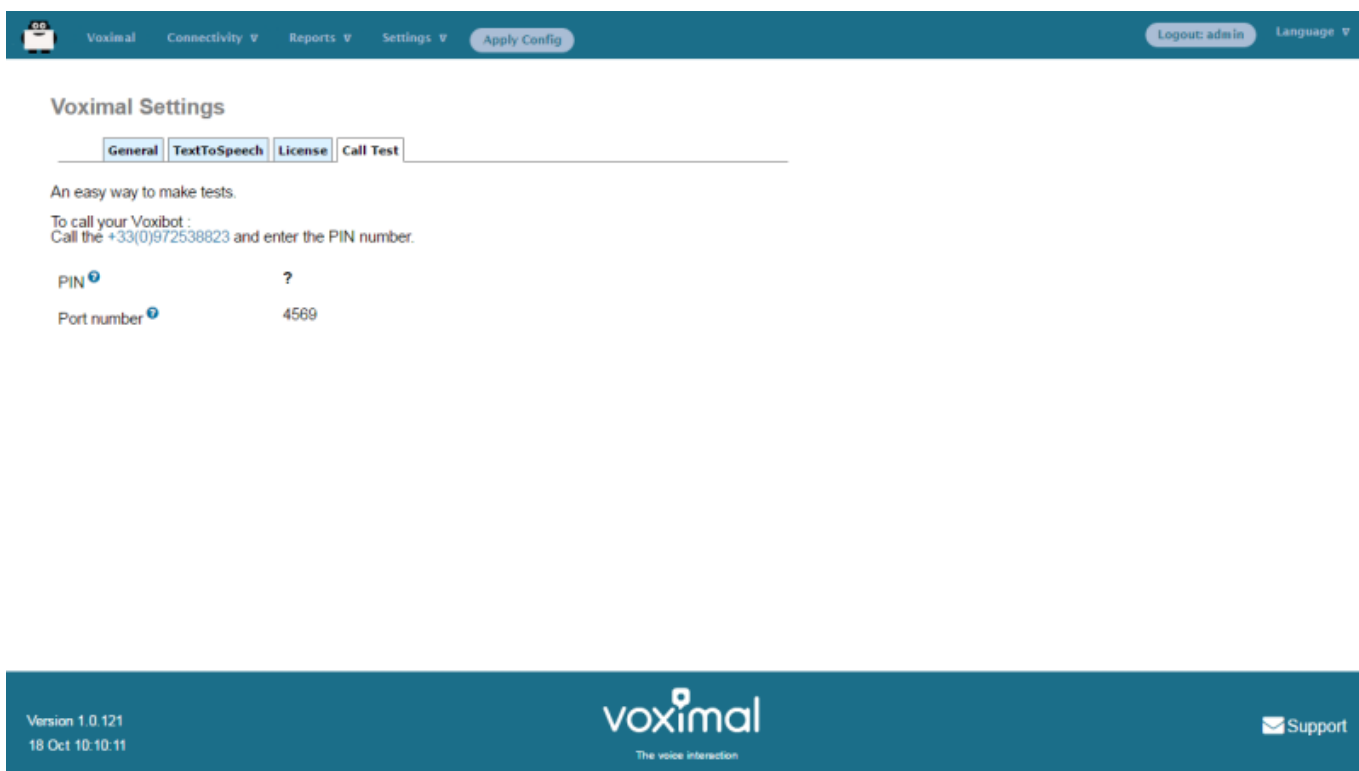
- [laxLite](#) (old windows application)
- [Zoiper](#) (freeware with commercial offer)
- [YateClient](#) (opensource freeware)

Account datas :

- username : user
- password : (get it form the Voximal/Settings/Test)
- server : (the IP adress of your server)

## Get your password from the Web Interface

Select Setting → Voximal Setting → Test



## Get your password from the Asterisk console

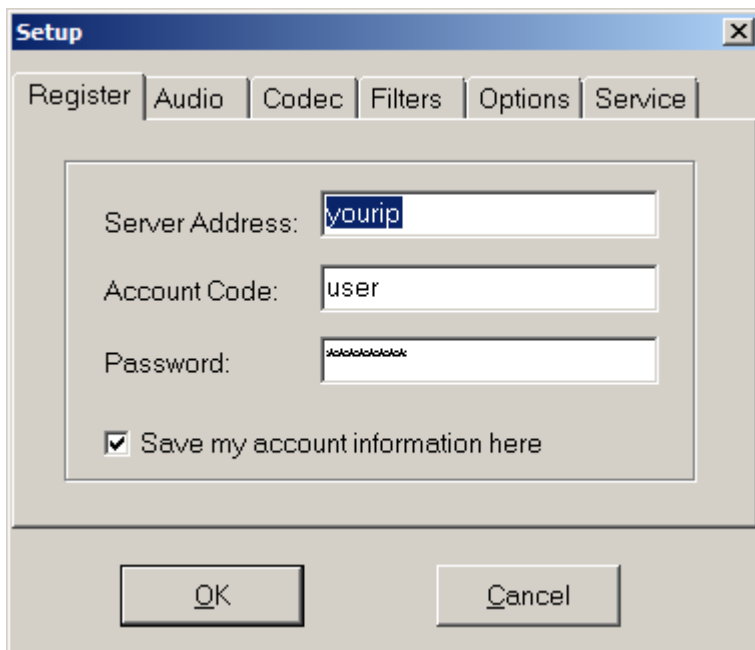
Execute :

```
raspbx*CLI> voximal show license
Version      : V14.0
Build
CVS Revision : $Revision: 1.853 $
```

```
Gcc      : V4.9
Arch     : 32 bits
Target   : i686
Asterisk : V13.11.2
Options  sum :
Date     : Nov  3 2016 21:40:06
Code     : b6de76bcb827eb415eb3b6f75b1001
UID      : cb773b52-a362-11e6-af57-b827eb415eb3
PIN      : 3152
Password : cb773b52
Key      :
Max sessions : 1
Options
  TextToSpeech : Yes
  Speech       : Yes
State       : ok
```

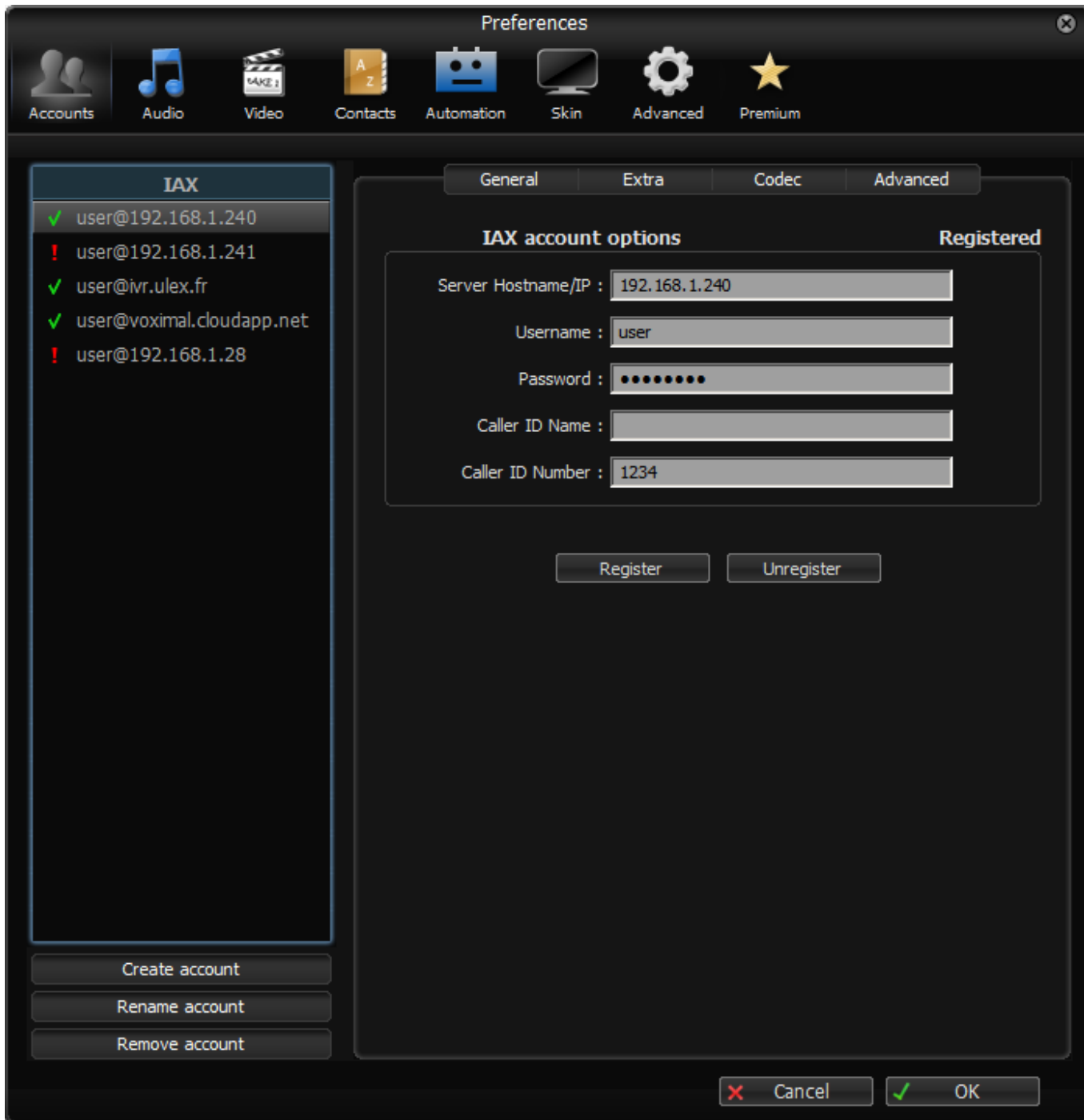
Your password is : **cb773b52**

## IaxLite



## Zoiper

- Run Zoiper once you've installed it and enter the credentials for the account on your Voximal. You'll need the IP address of your server and your extension 'user' password.
- Choose Settings → Accounts and click the **[Create Account]** button.
- Select IAX.
- Fill in the blanks using the IP address of your server, 'user' for your account name, and whatever password got from your Voximal installation server.



## YateClient

- Run YateClient once you've installed it and enter the credentials for the 'user' extension on Voximal. You'll need the IP address of your server plus your extension user password.
- Choose Settings → Accounts and click the **[New]** button.
- Fill in the blanks using the IP address of your server, 'user' for your account name, and whatever password got from your Voximal installation server.

**Edit account: iax:user@192.168.1.28**

Use provider:	-none-	▼	Domain:	<input type="text"/>	
Protocol:	iax	▼	Outbound proxy:	<input type="text"/>	
Username:	user				
Password:	<input type="password"/>				
Save password:	<input type="checkbox"/>				
Server:	192.168.1.28				
	Advanced >>			Registration Interval:	<input type="text"/>

Ok Cancel ?

From: <https://wiki.voximal.com/> - **Voximal documentation**

Permanent link: [https://wiki.voximal.com/doku.php?id=installation\\_guide:softphone:start&rev=1478511437](https://wiki.voximal.com/doku.php?id=installation_guide:softphone:start&rev=1478511437)

Last update: **2016/11/07 09:37**

