

Soft Phone connection

Set up a software telephone so that you can play with Voximal. We recommend Zoiper or YateClient which are free. Download them from :

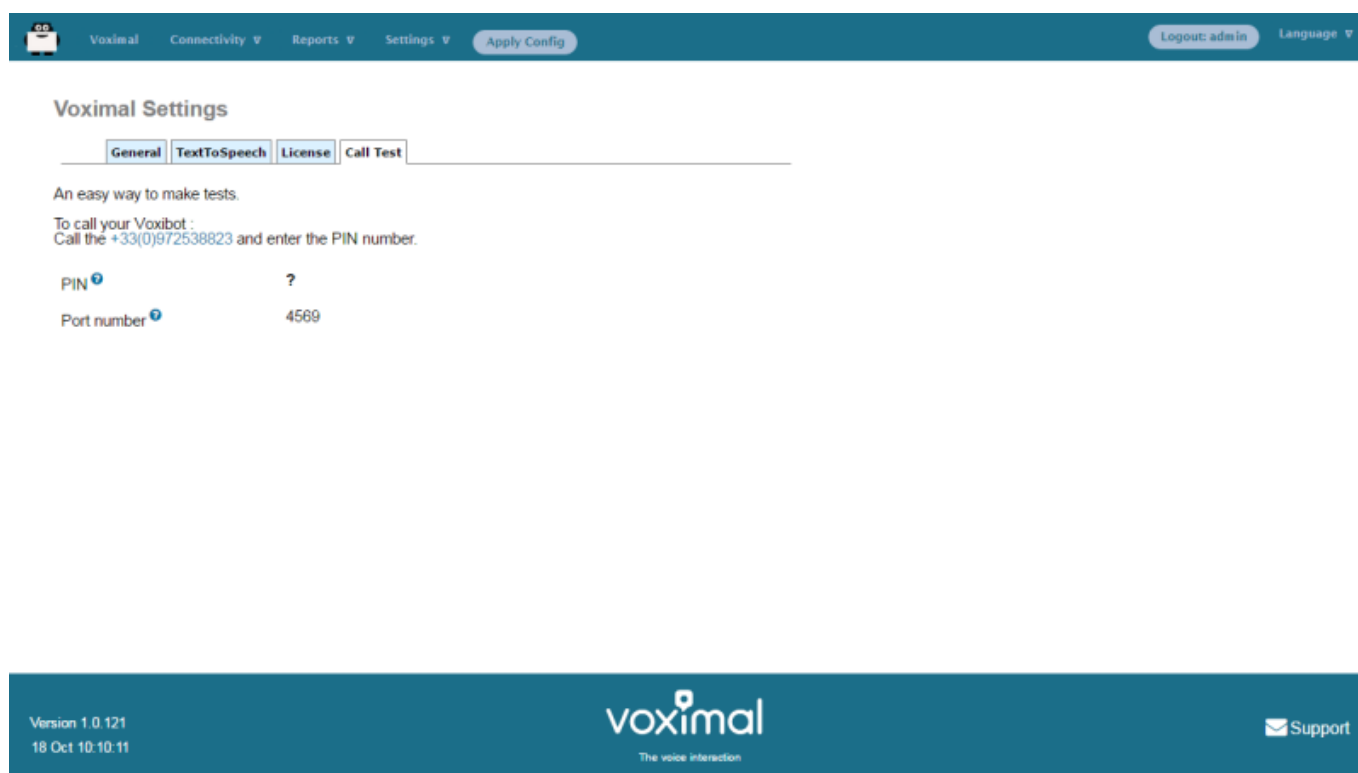
- [laxLite](#) (old windows application)
- [Zoiper](#) (freeware with commercial offer)
- [YateClient](#) (opensource freeware)

Account datas :

- username : user
- password : (get it form the Voximal/Settings/Test)
- server : (the IP adress of your server)

Get your password from the Web Interface

Select Setting → Voximal Setting → Test



Get your password from the Asterisk console

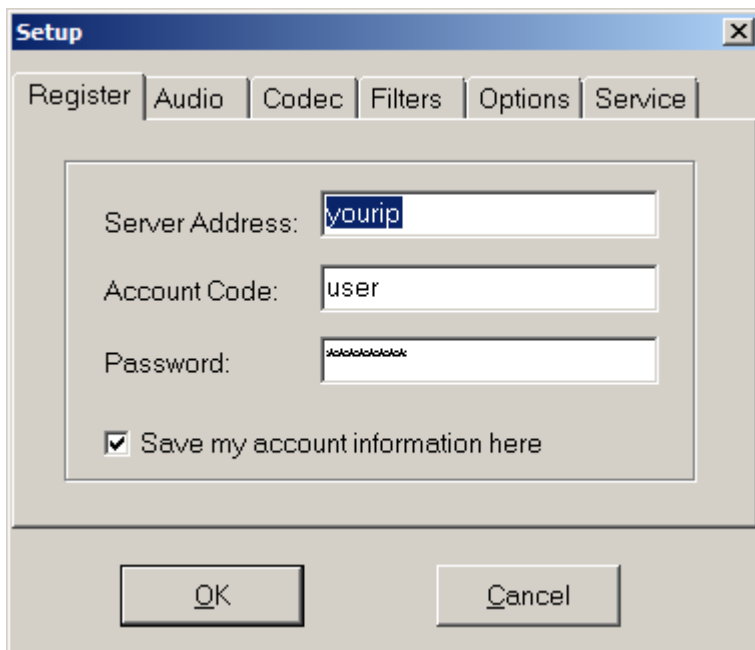
Execute :

```
raspbx*CLI> voximal show license
Version      : V14.0
Build
CVS Revision : $Revision: 1.853 $
```

```
Gcc      : V4.9
Arch     : 32 bits
Target   : i686
Asterisk : V13.11.2
Options sum :
Date     : Nov  3 2016 21:40:06
Code     : b6de76bcb827eb415eb3b6f75b1001
UID      : cb773b52-a362-11e6-af57-b827eb415eb3
PIN      : 3152
Password : cb773b52
Key      :
Max sessions : 1
Options
  TextToSpeech : Yes
  Speech       : Yes
State      : ok
```

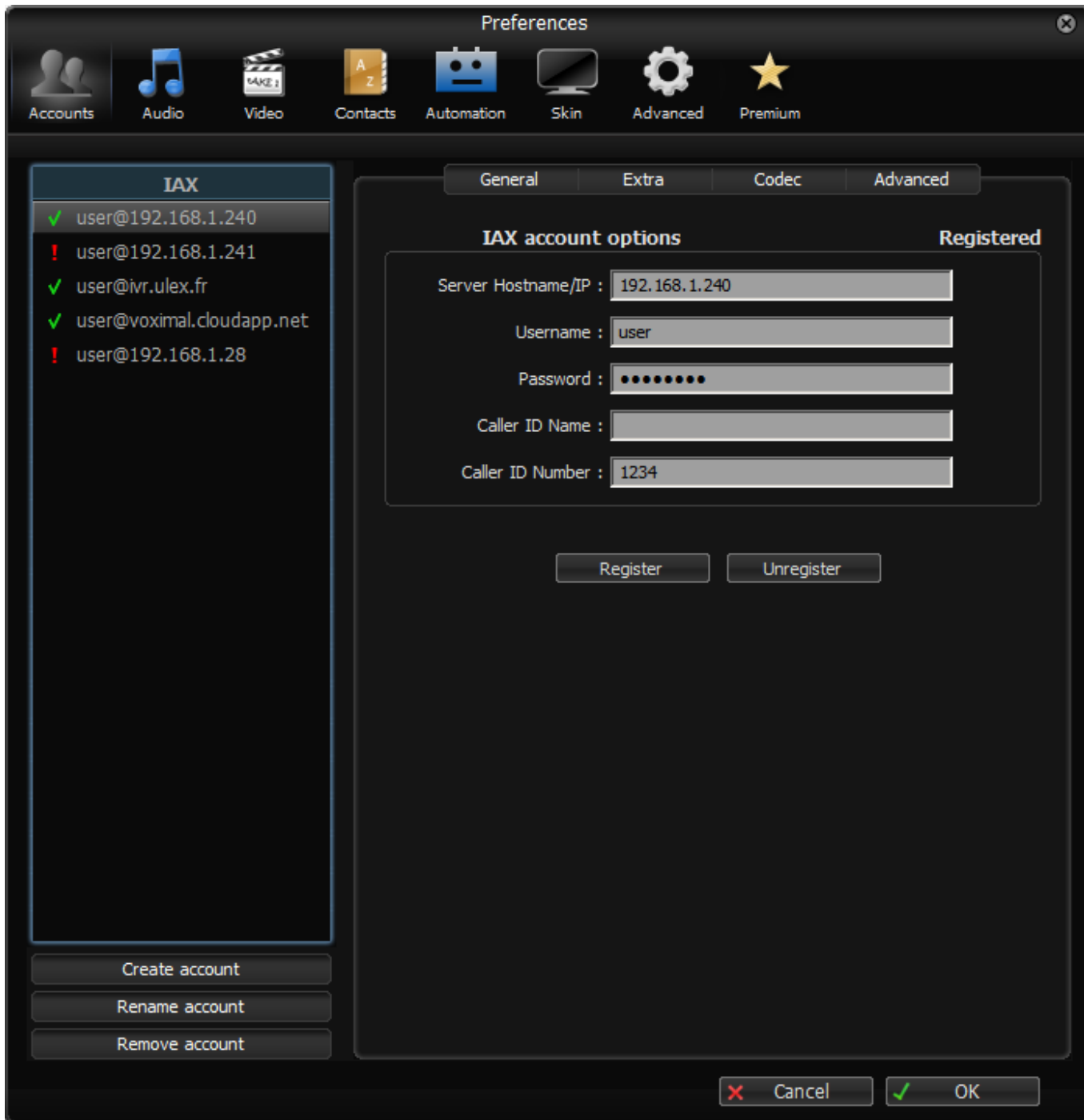
Your password is : **cb773b52**

IaxLite



Zoiper

- Run Zoiper once you've installed it and enter the credentials for the account on your Voximal. You'll need the IP address of your server and your extension 'user' password.
- Choose Settings → Accounts and click the **[Create Account]** button.
- Select IAX.
- Fill in the blanks using the IP address of your server, 'user' for your account name, and whatever password got from your Voximal installation server.



YateClient

- Run YateClient once you've installed it and enter the credentials for the user extension on Incredible PBX. You'll need the IP address of your server plus your extension user password.
- Choose Settings → Accounts and click the New button. Fill in the blanks using the IP address of your server, 'user' for your account name, and whatever password got from your Voximal installation server.

Use provider: -none-
Protocol: iax
Username: user
Password:
Save password:
Server: 192.168.1.28
Domain:
Outbound proxy:
Registration Interval:
Advanced >>
Ok Cancel ?

From: <https://wiki.voximal.com/> - **Voximal documentation**

Permanent link: https://wiki.voximal.com/doku.php?id=installation_guide:softphone:start&rev=1478511392

Last update: **2016/11/07 09:36**

