

Soft Phone connection

Set up a software telephone so that you can play with Voximal. We recommend Zoiper or YateClient which are free. Download them from :

- [laxLite](#) (old windows application)
- [Zoiper](#) (freeware with commercial offer)
- [YateClient](#) (opensource freeware)

Account datas :

- username : user
- password : (get it form the Voximal/Settings/Test)
- server : (the IP adress of your server)

Get your password from the Web Interface

Select Setting → Voximal Setting → Test

Voximal Settings

General | **TextToSpeech** | License | Call Test

An easy way to make tests.
To call your Voxibot :
Call the +33(0)972538823 and enter the PIN number.

PIN	?
Port number	4569

Version 1.0.121
18 Oct 10:10:11

voximal
The voice interaction

Support

Get your password from the Asterisk console

Execute :

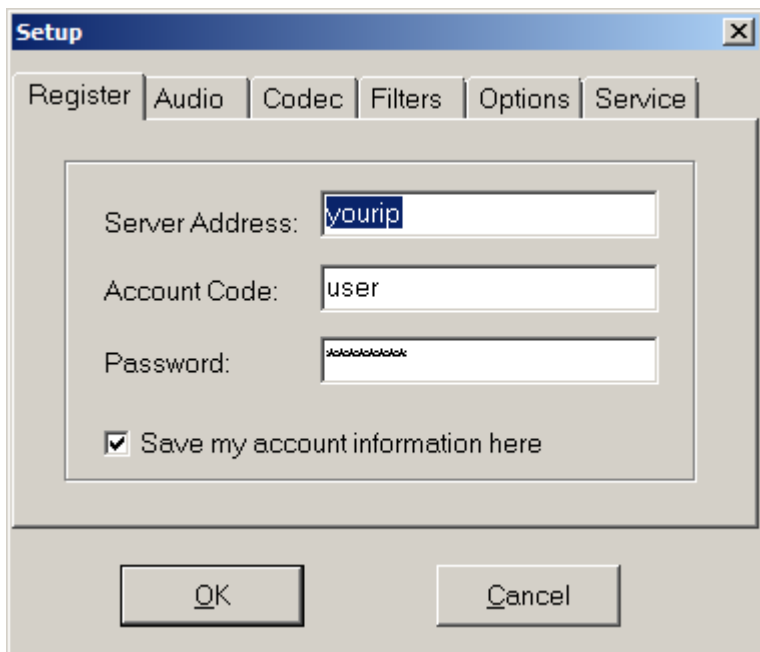
```
raspbx*CLI> voximal show license  
Version      : V14.0  
Build  
CVS Revision : $Revision: 1.853 $
```

```
Gcc      : V4.9
Arch     : 32 bits
Target   : i686
Asterisk : V13.11.2
Options sum :
Date     : Nov  3 2016 21:40:06
Code     : b6de76bcb827eb415eb3b6f75b1001
UID      : cb773b52-a362-11e6-af57-b827eb415eb3
PIN      : 3152
Password : cb773b52
Key      :
Max sessions : 1
Options
  TextToSpeech : Yes
  Speech       : Yes
State       : ok
```

Your password is : **cb773b52**

IaxLite

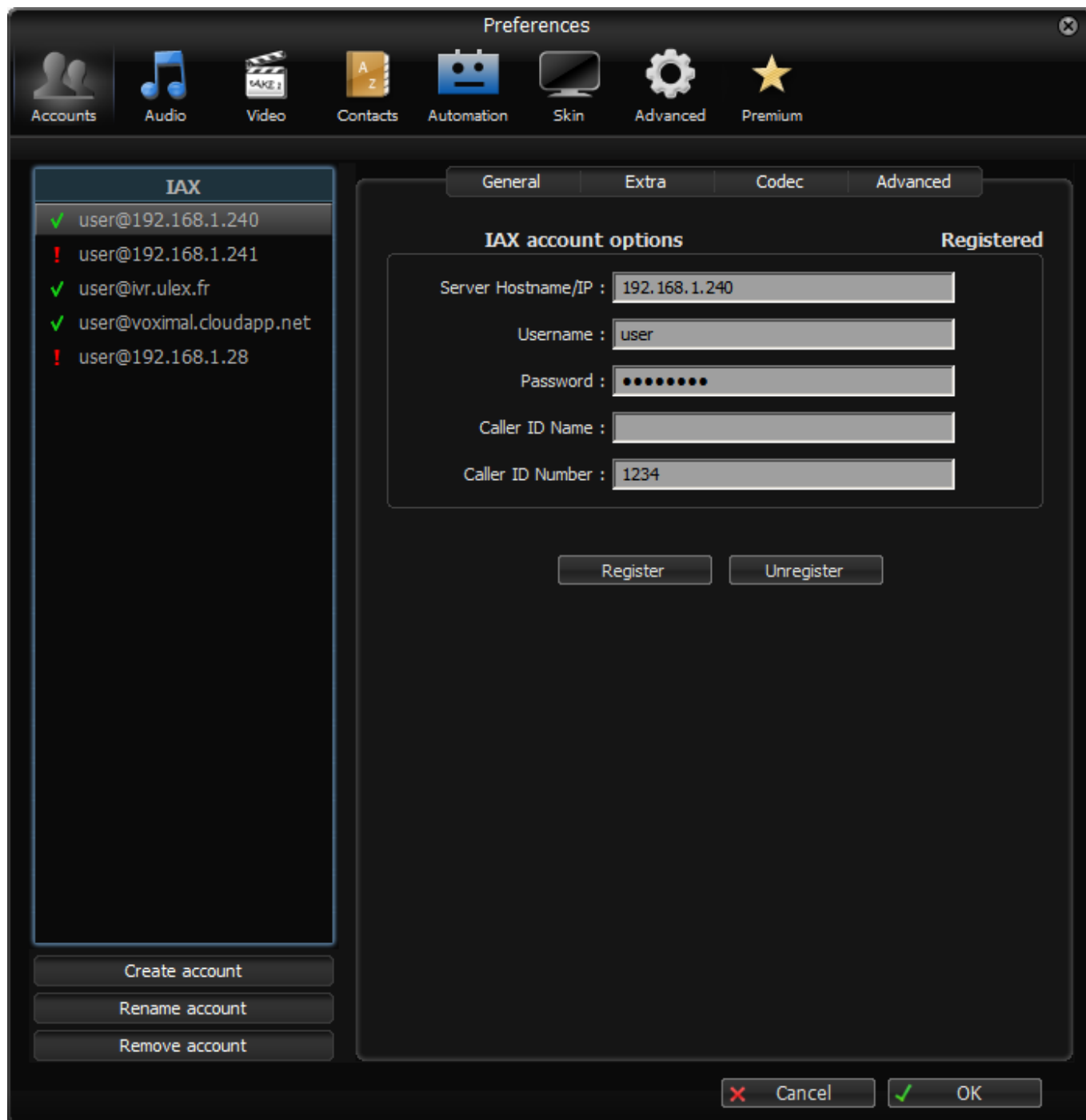
- Run IAXLite once you've installed it and enter the credentials for the account on your Voximal. You'll need the IP address of your server and your extension 'user' password.
- Click the **[Set.]** button.
- Fill in the blanks using the IP address of your server, 'user' for your account name, and whatever password got from your Voximal installation server.



Zoiper

- Run Zoiper once you've installed it and enter the credentials for the account on your Voximal. You'll need the IP address of your server and your extension 'user' password.

- Choose Settings → Accounts and click the **[Create Account]** button.
- Select IAX.
- Fill in the blanks using the IP address of your server, 'user' for your account name, and whatever password got from your Voximal installation server.



YateClient

- Run YateClient once you've installed it and enter the credentials for the 'user' extension on Voximal. You'll need the IP address of your server plus your extension user password.
- Choose Settings → Accounts and click the **[New]** button.
- Fill in the blanks using the IP address of your server, 'user' for your account name, and whatever password got from your Voximal installation server.

Edit account: iaxuser@192.168.1.28

Use provider:

Protocol:

Username:

Password:

Save password:

Server:

Domain:

Outbound proxy:

Registration Interval:

From: <https://wiki.voximal.com/> - **Voximal documentation**

Permanent link: https://wiki.voximal.com/doku.php?id=installation_guide:softphone:start

Last update: **2018/05/07 11:26**

