

Active a Voxibot Amazon AWS image



- **Web site** : <https://aws.amazon.com/>

Amazon Web Services (AWS) is a secure cloud services platform, offering compute power, database storage, content delivery and other functionality to help businesses scale and grow. Explore how millions of customers are currently leveraging AWS cloud products and solutions to build sophisticated applications with increased flexibility, scalability and reliability.

More information : [Getting started with AWS](#)

Connect to your AC2 Dashboard

A screenshot of the AWS console homepage in French. The top navigation bar includes a menu icon, the AWS logo, and links for 'Mise en route', 'Produits', 'Solutions', 'Plus', 'Français', 'Mon compte', and a 'Créer votre compte' button. The main content area has a green background with a large heading 'Créez votre premier projet avec AWS en utilisant nos guides étape par étape.' and a 'Voir les projets' link. To the right, there's a 'Gérez vos ressources' section with a 'Se connecter à la console' button and information about the 'Application mobile AWS Console'. Below this, there are four service tiles: 'AMAZON API GATEWAY', 'AMAZON ECS', 'AWS KEY MANAGEMENT SERVICE', and 'AMAZON SNOWBALL', each with an icon and a brief description in French.

The image shows two screenshots of the AWS Management Console. The top screenshot displays the 'Amazon Web Services' page, which lists various services categorized into Compute, Storage & Content Delivery, Database, Developer Tools, Management Tools, Security & Identity, Internet of Things, Game Development, Mobile Services, and Application Services. The bottom screenshot shows the 'EC2 Dashboard' with a sidebar on the left containing navigation links like 'Events', 'Tags', 'Reports', 'Limits', 'INSTANCES', 'IMAGES', 'ELASTIC BLOCK STORE', 'NETWORK & SECURITY', 'LOAD BALANCING', 'AUTO SCALING', and 'COMMANDS'. The main content area shows 'Resources' for EC2 instances in the EU Central (Frankfurt) region, including a list of running instances, dedicated hosts, volumes, key pairs, and placement groups. A 'Create Instance' button is visible, along with a 'Service Health' section showing the status of the EU Central (Frankfurt) region and its availability zones.

Launch a new instance

- Click the **[Launch Instance]** button.
- Select **[Community AMIs]**
- Enter in the search fiell : **voxibot**
- Select the lastes Voxibot AMI by pushing the **[Select]** button.

Step 1: Choose an Amazon Machine Image (AMI)

An AMI is a template that contains the software configuration (operating system, application server, and applications) required to launch your instance. You can select an AMI provided by AWS, our user community, or the AWS Marketplace; or you can select one of your own AMIs.

Quick Start | My AMIs | AWS Marketplace | **Community AMIs**

Operating system

- ☐ Amazon Linux
- ☐ Cent OS
- ☐ Debian
- ☐ Fedora
- ☐ Gentoo
- ☐ OpenSUSE
- ☐ Other Linux
- ☐ Red Hat
- ☐ SUSE Linux
- ☐ Ubuntu

Search:

Voxibot 1.0.117 latest - ami-95d497e6

Voxibot V1.0.117 latest for Amazon Linux

Root device type: ebs | Virtualization type: hvm

Select

64-bit

1 to 1 of 1 AMIs

© 2008 - 2016, Amazon Web Services, Inc. or its affiliates. All rights reserved. | Privacy Policy | Terms of Use

Launch next steps

Step 2: Choose an Instance Type

Amazon EC2 provides a wide selection of instance types optimized to fit different use cases. Instances are virtual servers that can run applications. They have varying combinations of CPU, memory, storage, and networking capacity, and give you the flexibility to choose the appropriate mix of resources for your applications. [Learn more](#) about instance types and how they can meet your computing needs.

Filter by: **All instance types** | **Current generation** | [Show/Hide Columns](#)

Currently selected: t2.micro (Variable ECUs, 1 vCPUs, 2.5 GHz, Intel Xeon Family, 1 GiB memory, EBS only)

	Family	Type	vCPUs	Memory (GiB)	Instance Storage (GB)	EBS-Optimized Available	Network Performance
<input type="checkbox"/>	General purpose	t2.nano	1	0.5	EBS only	-	Low to Moderate
<input checked="" type="checkbox"/>	General purpose	t2.micro Free tier eligible	1	1	EBS only	-	Low to Moderate
<input type="checkbox"/>	General purpose	t2.small	1	2	EBS only	-	Low to Moderate
<input type="checkbox"/>	General purpose	t2.medium	2	4	EBS only	-	Low to Moderate
<input type="checkbox"/>	General purpose	t2.large	2	8	EBS only	-	Low to Moderate
<input type="checkbox"/>	General purpose	m4.large	2	8	EBS only	Yes	Moderate
<input type="checkbox"/>	General purpose	m4.xlarge	4	16	EBS only	Yes	High

[Cancel](#) | [Previous](#) | [Review and Launch](#) | [Next: Configure Instance Details](#)

© 2008 - 2016, Amazon Web Services, Inc. or its affiliates. All rights reserved. | Privacy Policy | Terms of Use

You can skip the fine tune option to directly launch the instance, so you will configure your Security group here are later from the Dashboard :

- Open TCP / SSH port : 22
- Open TCP / HTTP port : 80
- Open UDP / IAX port : 4569

The IAX port is used to allows placing calls from :

- a IAX Soft Phone ([Soft Phone connection](#))
- the test numbers ([Call the test service](#))

If you choice to connect a Voip account to a Telecom provider, you will need to open :

- Open UDP / SIP port : 5060 (take care about the SIP attacks)
- Open UDP / RTP ports : 10000 to 20000

Step 2: Choose an Instance Type
Amazon EC2 provides a wide selection of instance types optimized to fit different use cases. Instances are virtual servers that can run applications. They have varying combinations of CPU, memory, storage, and networking capacity, and give you the flexibility to choose the appropriate mix of resources for your applications. [Learn more](#) about instance types and how they can meet your computing needs.

Filter by: **All instance types** **Current generation** [Show/Hide Columns](#)

Step 7: Review Instance Launch
Please review your instance launch details. You can go back to edit changes for each section. Click **Launch** to assign a key pair to your instance and complete the launch process.

Improve your instances' security. Your security group, launch-wizard-1, is open to the world.
Your instances may be accessible from any IP address. We recommend that you update your security group rules to allow access from known IP addresses only. You can also open additional ports in your security group to facilitate access to the application or service you're running, e.g., HTTP (80) for web servers. [Edit security groups](#)

AMI Details [Edit AMI](#)
Voxibot 1.0.117 latest - ami-95d497e6
Voxibot V1.0.117 latest for Amazon Linux
Root Device Type: ebs Virtualization type: hvm

Instance Type [Edit instance type](#)

Instance Type	ECUs	vCPUs	Memory (GiB)	Instance Storage (GB)	EBS-Optimized Available	Network Performance
t2.micro	Variable	1	1	EBS only	-	Low to Moderate

Security Groups [Edit security groups](#)

Security group name: launch-wizard-1
Description: launch-wizard-1 created 2016-11-07T12:11:52.532+01:00

Type	Protocol	Port Range	Source
SSH	TCP	22	0.0.0.0/0

Instance Details [Edit instance details](#)
Storage [Edit storage](#)
Tags [Edit tags](#)

[Cancel](#) [Previous](#) [Launch](#)

Validate your instance configuration.

You got the Launch status : Instance launching...

AWS Services Edit Ulex Innovative Systems Ireland Support

Launch Status

Your instances are now launching
The following instance launches have been initiated: [i-30809ba7](#) [View launch log](#)

Get notified of estimated charges
Create billing alerts to get an email notification when estimated charges on your AWS bill exceed an amount you define (for example, if you exceed the free usage tier).

How to connect to your instances

Your instances are launching, and it may take a few minutes until they are in the **running** state, when they will be ready for you to use. Usage hours on your new instances will start immediately and continue to accrue until you stop or terminate your instances.

Click **View instances** to monitor your instances' status. Once your instances are in the **running** state, you can **connect** to them from the Instances screen. [Find out](#) how to connect to your instances.

▼ Here are some helpful resources to get you started

- [How to connect to your Linux instance](#)
- [Amazon EC2: User Guide](#)
- [Learn about AWS Free Usage Tier](#)
- [Amazon EC2: Discussion Forum](#)

While your instances are launching you can also

- [Create status check alarms](#) to be notified when these instances fail status checks. (Additional charges may apply)

Feedback English © 2008 - 2016, Amazon Web Services, Inc. or its affiliates. All rights reserved. Privacy Policy Terms of Use

AWS Services Edit Ulex Innovative Systems Ireland Support

EC2 Dashboard
Events
Tags
Reports
Limits

INSTANCES
Instances
Spot Requests
Reserved Instances
Scheduled Instances
Dedicated Hosts

IMAGES
AMIs
Bundle Tasks

ELASTIC BLOCK STORE
Volumes
Snapshots

NETWORK & SECURITY
Security Groups
Elastic IPs
Placement Groups
Key Pairs
Network Interfaces

Launch Instance Connect Actions

Filter by tags and attributes or search by keyword

Name	Instance ID	Instance Type	Availability Zone	Instance State	Status Checks	Alarm Status	Public DNS
	i-30809ba7	t2.micro	eu-west-1b	running	Initializing	None	ec2-52-212-253-65.eu-...

Instance: i-30809ba7 Public DNS: ec2-52-212-253-65.eu-west-1.compute.amazonaws.com

Description Status Checks Monitoring Tags

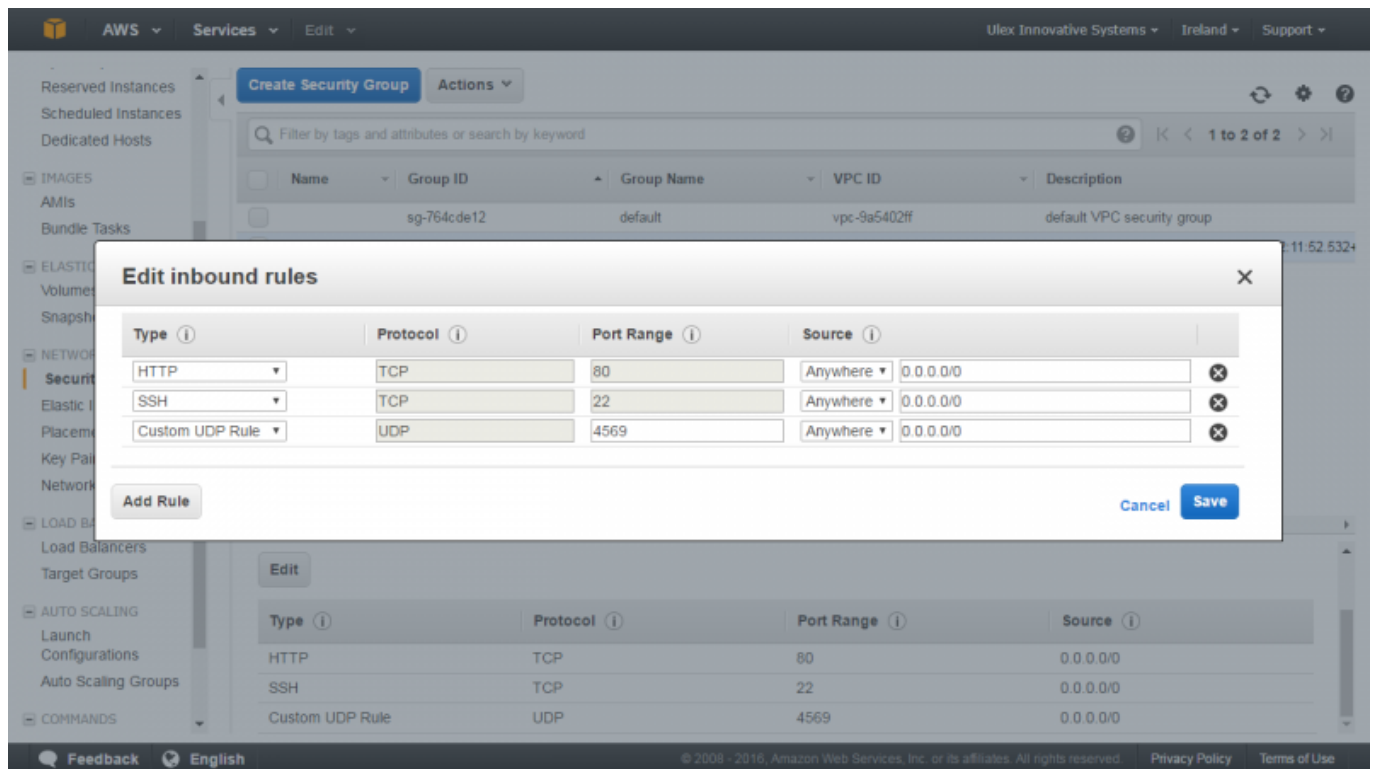
Instance ID i-30809ba7 Public DNS ec2-52-212-253-65.eu-west-1.compute.amazonaws.com

Instance state running Public IP 52.212.253.65

Instance type t2.micro Elastic IPs

Feedback English © 2008 - 2016, Amazon Web Services, Inc. or its affiliates. All rights reserved. Window size: 1280 x 720 Viewport size: 1280 x 720

Edit Security groups (open/close TCP/UDP ports)



Finalize your installation

To finish your installation you need to connect for the first time to your Web Interface to set your administration password. For security reasons, you need do to it just after the launch.

The screenshot shows the 'Initial setup' screen of the Voximal Administration interface. It prompts the user to provide core credentials to create an admin user. The form includes fields for Username (pre-filled with 'admin'), Password (pre-filled with 'Admin password'), and Confirm Password (pre-filled with 'Admin password'). A 'Create Admin Account' button is located at the bottom right of the form.

Welcome to Voximal Administration!

Initial setup

Please provide the core credentials that will be used to create **admin** user

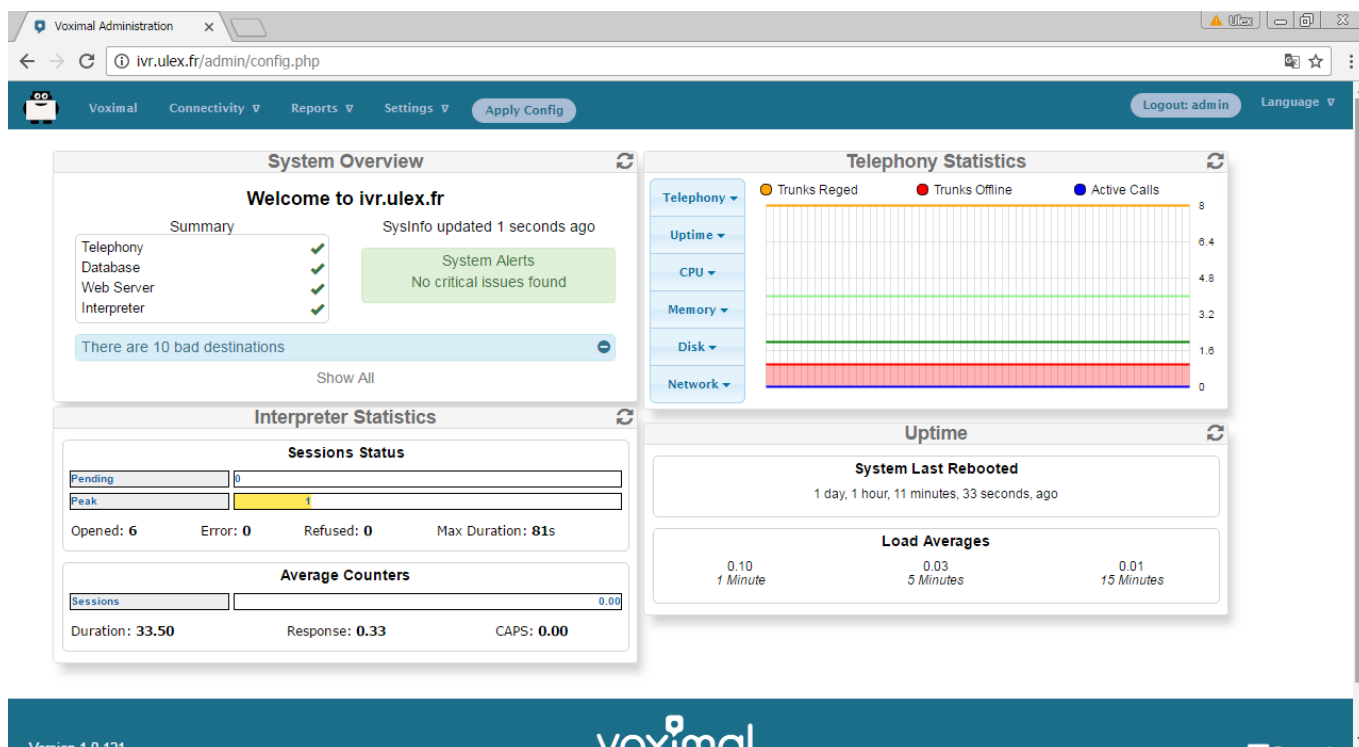
Username: admin

Password: Admin password

Confirm Password: Admin password

Create Admin Account

You will see the main status panel :



Test your installation

You have two simple ways to test and validate your installation :

- With a soft phone : [Soft Phone connection](#)
- With the test numbers : [Call the test service](#)

From:
<https://wiki.voximal.com/> - **Voximal documentation**

Permanent link:
https://wiki.voximal.com/doku.php?id=cloudproviders:amazon_aws&rev=1478521570

Last update: **2016/11/07 12:26**

